



V. ORLANDI
T O W I N G S Y S T E M S

NEW

E550 PACIFIC

50mm Coupling

- THE STRONGEST: **D-VALUE 330 KN**
- THE LIGHTEST: **42 KG**
- THE HIGHEST VERTICAL LOAD: **S-VALUE 2500 KG**



SERVICE & MAINTENANCE

- 4 minutes to replace THE COUPLING PIN
- 8 minutes to replace THE WEAR PAD
- 40 minutes to replace THE UPPER & LOWER BUSH
- 55 minutes to replace THE FULL REBUILD COUPLING KIT
- Smashed the BELL MOUTH? Just replace the jaw in only 13 minutes and NOT the whole coupling assembly
- The E550 PACIFIC can be uncoupled in any angle reducing productivity loss to the fleet

PRODUCTIVITY

- BELL MOUTH is independent and not casted to the mechanism box; it can be easily replaced without being forced to replace the whole coupling.
- MECHANISM BOX is completely sealed (no dust inside and no concrete effect on pin release)
- HOLE PATTERN: V. ORLANDI and competitors have the same ISO hole pattern (160x100) - interchangeable
- PIN TREATMENT: V. ORLANDI has applied a full length-extended heat treatment to the tow pin for longer service life.
- SAFETY DEVICE: all the V. ORLANDI Safety Kits have been designed to be retrofitted to different and previous applications.

The E550 PACIFIC can be uncoupled in any angle reducing productivity loss to the fleet

- OPENING HANDLE is located in a safety position, behind the bell-mouth: no operator injuries.



V. ORLANDI
T O W I N G S Y S T E M S

IMPORTANT SAFETY MESSAGE - OPERATION TIPS

TOW COUPLINGS ARE A SAFETY CRITICAL COMPONENT

In some instances, they DO NOT receive the attention required to function correctly
Please ensure staff owner / driver / mechanic carry out these safety procedures to
ensure your trailer coupling is reliable and safe



1. CHECK COUPLING OPERATION

- There is recoil tension on lift handle
- Mechanism opens easily / snaps closed
- Guide mouth lock engages
- Coupling is tight in mount flange
- Rubber cushion wear plate are intact
- Tie rod nut split pin remains in place



ALWAYS CHECK Split Pin on tie rod nut

2. THE BOTTOM BUSH

- **MUST BE CLEAR** of foreign material preventing the coupling pin from fully seating when closed.
- 20mm evacuation hole below the bush allows for removal of material (regular water blasting also assists)



CLEANING EVACUATION HOLE



CLEAN BOTTOM BUSH



V. ORLANDI
T O W I N G S Y S T E M S

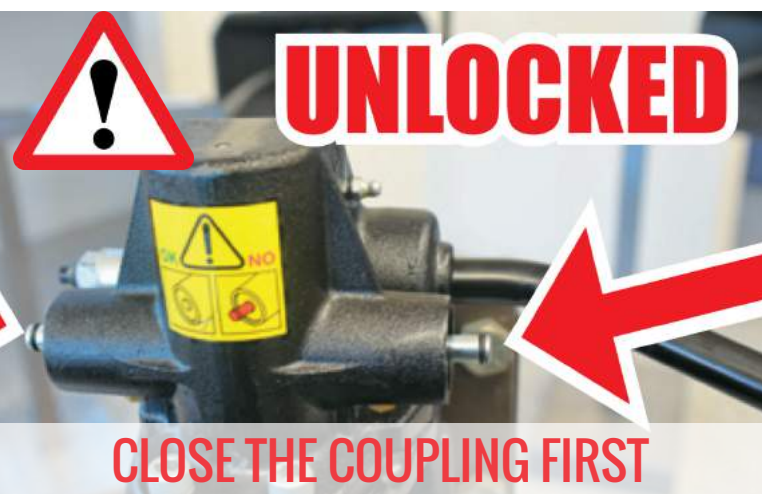
3. WITH TRAILER CONNECTED

- Mechanism closed two security locks will engage over tow pin.
- Visual indicators display status of the locks.

**DO NOT CONTINUE TO OPERATE IF
SECURITY LOCKS ARE NOT FULLY ENGAGED**



CHECK THE STATUS OF THE COUPLING BEFORE DRIVE OFF





V. ORLANDI
T O W I N G S Y S T E M S

4. LUBRICATION

- V. ORLANDI couplings require a small quantity of regular greasing
- ALWAYS grease with tow pin lifted. Over greasing will hydraulic the mechanism. It will be difficult to operate
- Remove excess grease



5. WHEN DISCONNECTED

- Travel with the pin down - Mechanism closed



6. OPERATIONAL DIFFICULTY

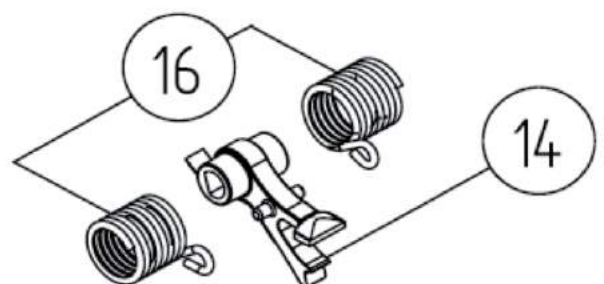
DO NOT OPEN / ACTIVATE COUPLING WITH EXTRA LONG BAR/PIPE

- V.ORLANDI Couplings do not need this trick to better manage the opening system.
- NO CONCRETE EFFECT: Top Mechanism complete sealed - NO DUST CONTAMINATION
- OPENING HANDLE positioned in safety location and therefore easier to open the coupling.
- CONTROL the level of grease and remove the excess if required



**ACTIVATE COUPLING WITH EXTRA BAR - EXCESS OF FORCES NOT REQUIRED
WHAT IS GOING TO HAPPEN?**

MIGHT DAMAGE
Activation Springs (Pos. 16 / PN# RG00178)
or Pin Lever (Pos. 14 / PN# RG00188)



7. GUIDE MOUTH LOCK SYSTEM

The guide mouth return spring works in conjunction with a plunger lock.

When coupling up heavy heavy impact to the guide mouth perimeter could bend the lock plunger and it will no longer function properly. if this fault exists replace plunger lock



8. BELL MOUTH / COUPLING JAW DAMAGED



V. ORLANDI COUPLING DESIGN differs from other brands and allows the operator to replace the bell-mouth / jaw ONLY without purchase the full unit.



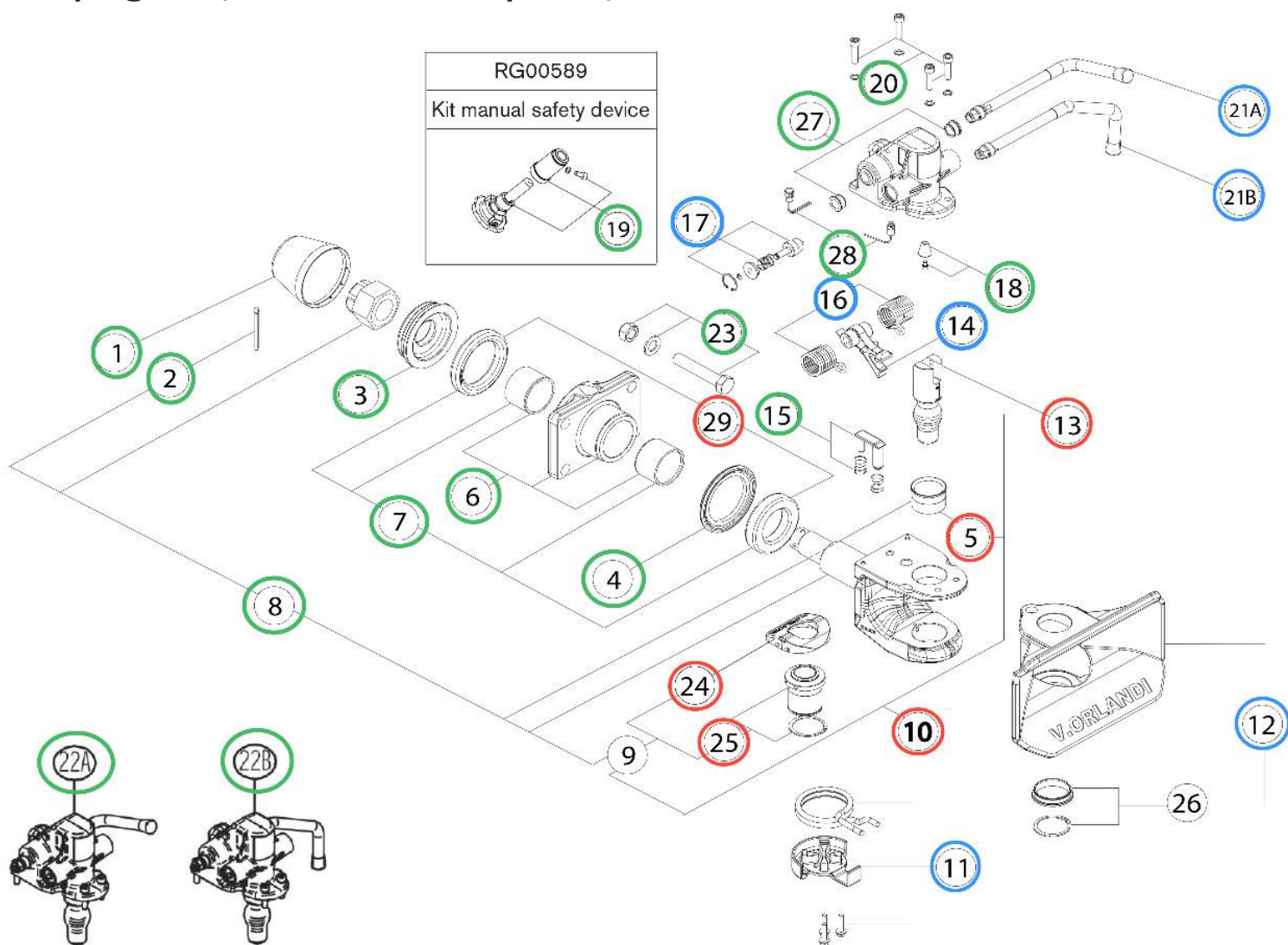
PN# RG00587 (Kit coupling jaw with bronze bush)



V. ORLANDI
T O W I N G S Y S T E M S

9. GENERAL CONDITIONS

Any coupling part that is damaged, defective or worn out will compromise the coupling ability to function and its possibly unsafe to use.



FAST MOVING PARTS / **ACCIDENTAL PARTS** / **SLOW MOVING PARTS**

The purpose of this manual is only to draw attention to basic preventive maintenance procedures on V. ORLANDI TRAILER COUPLING.

10. INSTRUCTION VIDEOS FOR SERVICE & MAINTENANCE



50mm COUPLING INSTALLATION



COUPLING PIN REPLACEMENT



WEAR PAD REPLACEMENT



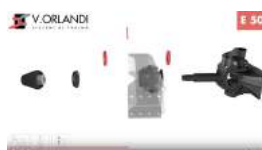
UPPER & BOTTOM BUSH REPLACEMENT



BELL MOUTH / JAW REPLACEMENT



LIFT LEVER REPLACEMENT



RUBBER BUFFERS REPLACEMENT



JAW LOCKING PIN REPLACEMENT